



Rittmeyer Service & Competence Center

for instrumentation in the field of hydropower and water supply

Your Benefits

- Efficiency, safety and protection of plant and environment
- Access to **industry experts** and scientific know-how
- **Preventive maintenance** and value retention of your assets
- Powerful data, process and service **monitoring tools**

Passion, innovation and experience are the essentials of our value adding services!

Proven expertise in hydraulics, flow dynamics and measurement technologies is not only reflected in our high quality products and solutions – but also available as a service.

All-inclusive «turn-key» installations, care-free maintenance packages as well as **IoT and cloud-solutions** from Rittmeyer can make your life easier.

Rittmeyer's service & competence center support you from design and specifications all the way to efficiency and asset protection throughout the life time of your equipment.

Regional Centers

Europe:

Rittmeyer AG Baar,
Switzerland
sales@rittmeyer.com
Phone +41 844 11 22 11



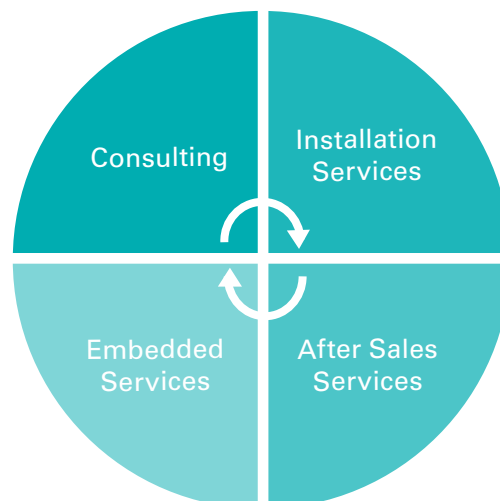
Asia:

Singapore
sales@rittmeyer.com
Phone +65 8161 7872



North America:

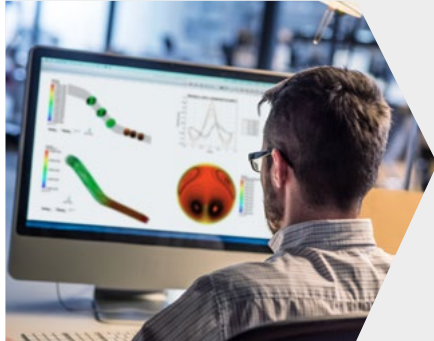
Algodones, NM 87001
robert.davis@rittmeyer.com
Phone +1 360 481 41 66



Reliability, Accessibility and Personal Support

Rittmeyer provides reliable services tailored to your individual needs.

LIFE TIME SERVICES



Consulting

Rittmeyer offers **pre-studies** of your specific planned flow, level or gate positioning solution or **reviews your existing installation**. Jointly we engineer the optimal and most sustainable solution for you, including for example:

- Design & specifications of your particular solution
- Penstock leak detection, sediment monitoring, turbine efficiency monitoring and more
- CFD analytics for high accuracy in challenging conditions (Computational Fluid Dynamics; Gauss-Jacobi, OWICS, etc.)



Installation Services

Rittmeyer **installs and commissions** your chosen flow, level or gate positioning solution and **trains** your operation personnel, including for example:

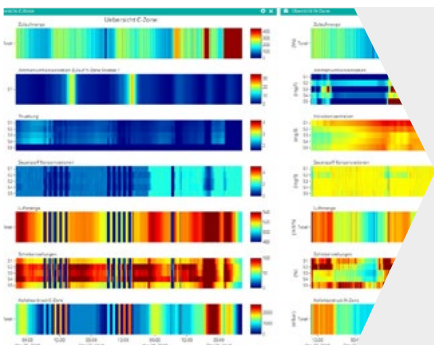
- **turn-key installation** by experienced service technicians
- Laser based **telemetric survey** tools for highest accuracy in transducer positioning
- Commissioning, incl. reports according to IEC60041, ASME PTC 18



After Sales Services

Rittmeyer devices work highly **reliable and precise for decades** – with very little or no maintenance at all. Nevertheless, many customers wish for regular check-ups of their installed solutions, being it for

- steadily increasing **safety and regulatory requirements**,
- growing **commercial and environmental focus** on efficiency & water consumption
- increased **technical complexity**, personnel changes
- or just simply to «put their mind at ease»!



Embedded Services

Rittmeyer devices are **IoT capable** and easily compatible with existing process control systems thanks to their **versatile communication features** (Ethernet, Modbus/RTU+TCP, PROFINET / PROFIBUS, HART®, M-Bus, CAN, BACnet etc.). Rittmeyer offers cloud solutions for your data, can assist you in analysis & interpretation and, with its Ritune suite, even provide a **full fledged data monitoring or process control system**.